

# Prime Retail in Union Square/Greenwich Village



**Location:** 36 East 12th Street  
Between Broadway and University

**Size:** Ground Floor 4,450 SF  
Lower Level 2,720 SF

**Rent:** Upon Request

**Frontage:** 40'

**Possession:** April 2020

**Ceilings:** 14'

## Features:

- Beautiful landmark quality cast iron frontage
- Ionic cast iron columns
- Flagpole with visibility from Broadway
- Dynamic Union Square location with access to the 4,5,6,N,Q,R and L trains with 35.25 million passengers annually
- Union Square sees 385,000 daily visitors
- High household income as well as NYU, Parsons, and New School student populations
- Dry use preferred

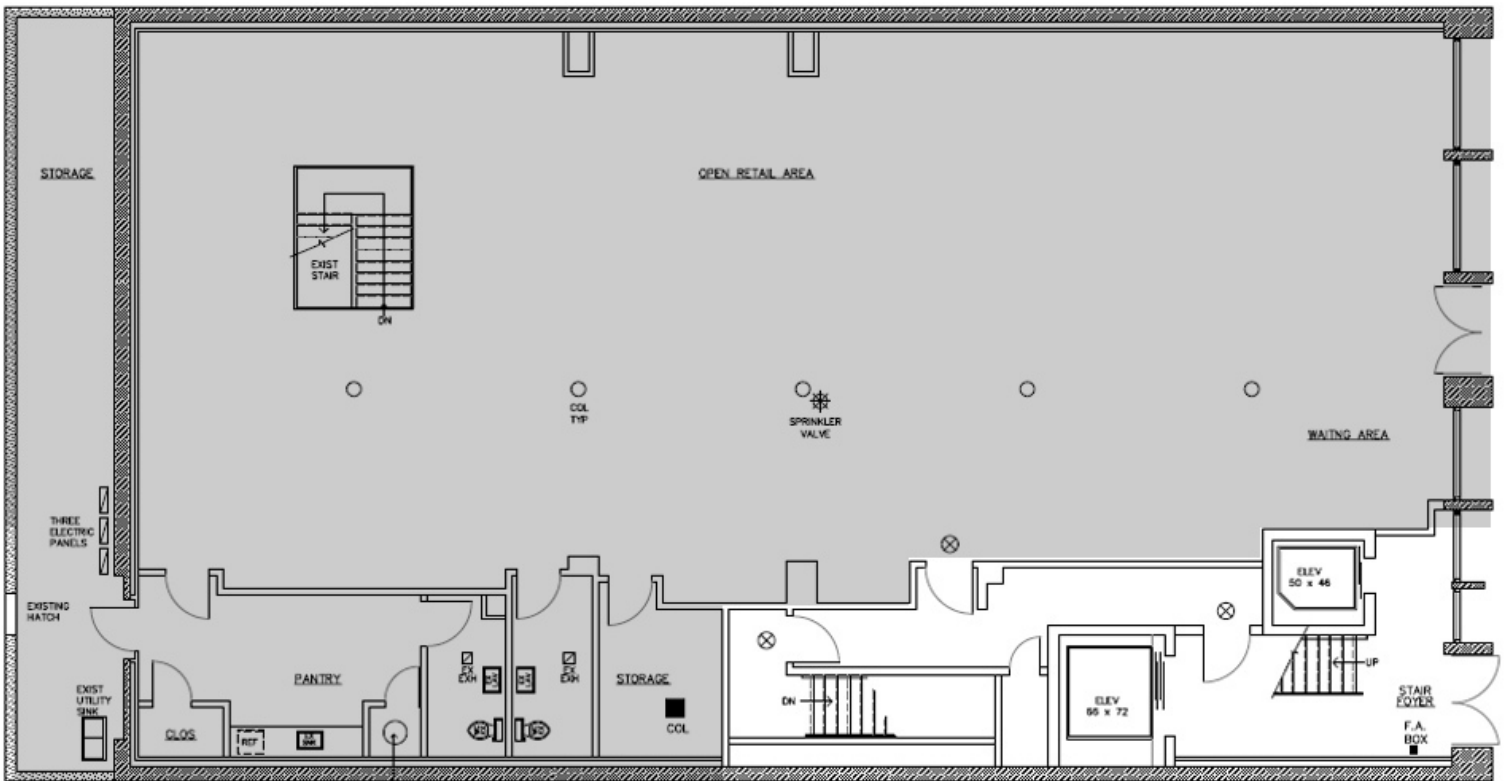


Doug Rice - 212-253-8703 - [Doug@NYCspaces.com](mailto:Doug@NYCspaces.com)

Rice & Associates - [www.NYCspaces.com](http://www.NYCspaces.com)

# Prime Retail in Union Square/Greenwich Village

## Ground Floor 4,450 SF



## Lower Level 2,750 SF

